



# Ore-Cutts

Volume XLV Number VIII

August 2009

**Come join us on 11 August at 7:00pm at the Mussell Senior Center for a Recap of the show and a slide show of the 42nd Annual Rainbow of Gems Show.** If you take pictures at the show, please get them to Wes before the meeting for inclusion in the slide show. Also please come prepared to discuss what went right, and what could be improved.

The display this month will be Your Treasures/Goodies acquired at the show.

Dessert will be cookies brought by Debbie Hood, Truman Burgess, & Don Nasholm.

*Everyone please wear red club vests to discourage the light-fingered. Look Alert!*

Saturday, August 8, 2009, 10:00 a.m. to 5:00 p.m.



Enjoy the displays, demonstrations and the vendor's many rocks & minerals for sale. Enjoy the great food in the snack bar. Volunteer: help is needed in the Snack Bar, & Hospitality Booth

Saturday August 8, 2009, 6:30 p.m.

Best-darned BBQ on the Central Coast! Tickets are \$10.00 for Adults and \$5.00 for kids 12 and under. Don't miss it!

Sunday August 9, 2009 10:00 a.m. to 5:00 p.m.

Enjoy the displays, demonstrations and the vendor's many rocks & minerals for sale. Enjoy the great food in the snack bar. Volunteer help is needed in the Snack Bar, & Hospitality Booth

Sunday August 9, 2009, 5:00 to 7:00 p.m.



Show takedown and clean up. We need everybody to help with this. Many hands make light work.

Sunday August 9, 2009, 7:00 to 9:00 p.m.

Post show victory dinner 7:00 p.m. at the Golden Dragon Restaurant, 151 Dana St. Nipomo

Monday August 10, 2009, 9:00 a.m. till Completed

Final clean up at St Joseph's: take up booth markers, sweep, mop, etc. We want to be good neighbors and to be welcomed back next year

### August 7-9, 2009 42nd Rainbow Of Gems Show

Wednesday, August 5, 2009  
9:00 a.m. to completion

Measure, layout and mark the Show areas. Wes needs help with this. Coffee and donuts will be there to reward the faithful. This is not strenuous.

Thursday, August 6, 2009  
8:00 a.m. till complete

Show set up at St Joseph's Church 298 S. Thompson Ave. Nipomo. We need some strong folks to move tables and cases, and everyone else to skirt the tables. Coffee and donuts will be there to reward the faithful. All members are cordially invited!

Thursday August 6, 2009  
6:00 to 7:30 p.m.

Chicken Dinner for Vendors, Exhibitors and Club members who have helped to layout and set up the show.

Friday, August 7, 2009  
10:00 a.m. to 5:00 p.m.



Opening of the 42nd annual **OMS Rainbow of Gems Show**. **Each family is requested to bring 2 pies for the snack bar.** Volunteer help is needed in the Snack Bar, & Hospitality Booth.

## Monthly Program Review

By Debbie Hood

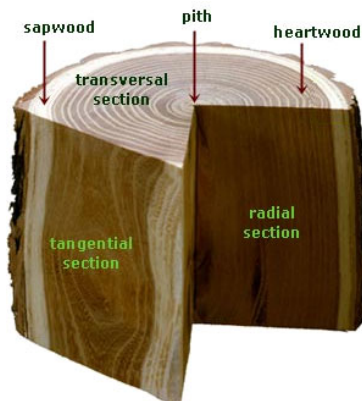
The June program was on Identifying Petrified Wood given to us by Jim Mills. The first thing to know is that you can not identify wood by color, hardness, or look as the petrification process replaces the wood with a variety of minerals that have different colors, harnesses and so on. You cannot judge by similar patterns, as you must use magnification to distinguish them. He also cautioned us not to assume all petrified wood from an area is the same species as there have been virtually no single species forests at any time, and you can not assume that the wood is of the same species as currently grow in the area as climatic conditions have changed radically over the time period required for petrification.

So what do you need to look at to identify your specimens? You need to look at the fine structure of the wood with at least a 10-power magnifier. Best is to be able to make 1 cell thick slices from 3 different planes and use a binocular microscope. Once you have identified and classified the specimen's structures you can use a Reference Book, such as we have in our OMS Library, to identify your specimen to the *Genus* level.

You will not be able to determine the species unless your specimen includes an attached reproductive structure, as the reproductive structures are how species are determined. When identifying wood on labels one should write the *Genus, sp.* to indicate that species cannot be determined.

There are two basic types of trees, Gymnosperms and Angiosperms. Gymnosperms are the cone-bearing plants and were the dominant plants of the Cenozoic age. Angiosperms comprise the flowering species and became dominant in the Mesozoic era. Among the angiosperms are the *dicots*; the plants whose seeds have two leaf-like structures that first emerge from the seed upon sprouting, and the monocots, which have only one, such as the palms. The monocots are rarely found as fossils except for the palms.

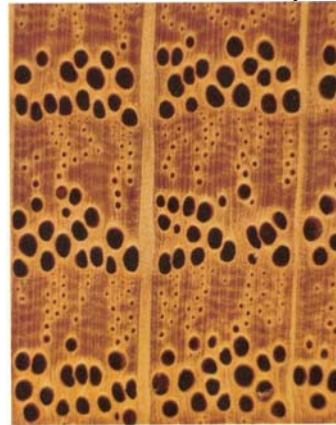
There are also *arborescent* forms, plants that look a bit like trees but were really giant ferns that



dominated the Paleozoic era.

The planes of the wood that should be examined are a *transverse section*, which is perpendicular to the direction of growth, a *radial section*, which is bark to bark through the center of the trunk, and a *tangential section*, which is bark to bark but does *not* go through the center.

When you examine a radial section you will see concentric rings each of which represents 1 annual growth period, consisting of the pores of the spring wood and the medulary rays of the summer wood.



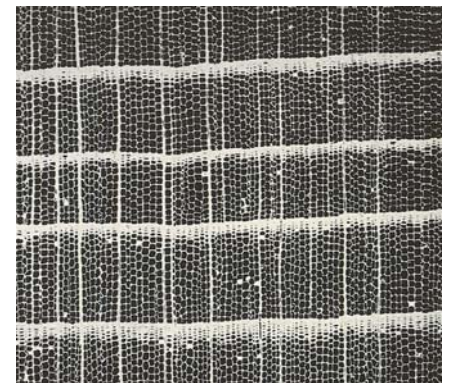
NORTHERN RED OAK  
*Quercus rubra*



WHITE OAK  
*Quercus alba*

Under magnification one can distinguish the pores, parenchyma, and the medulary rays, and their relative size and arrangement. Once that is done, then comparison to Reference books is done to determine the genus.

In the Gymnosperms you will see no pores. Instead, there are *tracheids*, net-like structures that move water and nutrients up and down the trunk. The gymnosperms are identified by the size of the tracheids, the presence or absence of *resin canals*, which are always round and much larger than the tracheids and not found on the growth rings, and the presence or absence of *resin cells*. The shape of the tracheids is sometimes helpful in making identification, but it can be difficult and depends on exacting measurement of their size. *Redwood*



Also helpful in making a Genus determination is the *geological context* of your find. The age of the level it

was found at can lead to an identification of the genera that flourished there at that time by knowing the type of climate that existed at that time and the flora that grew then.

In tropical woods you will find no true growth rings, as growth is fairly uniform all year long except in drought conditions. What appear to be growth rings actually is a record of changes in available water due to climate changes.

In all scientists use 67 separate determinates to describe wood taxonomically down to the species level, but realistically we can expect to use only a few to determine at least to the Genus level.

### Prez Box

By Debbie Hood

In reviewing our lessons learned from last year's show, it is clear that one very important item to keep in mind this year is *security*. I am requesting that everybody wear a red vest, if you have one, or a club t-shirt or hat will do. *Most important is for club members to be identifiable and visible and for us to be aware and vigilant.* Our dealers suffered some losses last year, and while I realize we cannot prevent all thefts, we can certainly make it more difficult to be a thief at our show!

Beyond that, I hope everybody will contribute to making this show a success by donating 1 or 2 pies to the snack bar, and putting in some time volunteering in the snack bar or the hospitality table as well as helping out with the set up and clean up afterward.

And have a good time visiting with old friends, making some new ones, seeing new and wonderful minerals and rocks, and learning something new from the demonstrators. Most of all have a wonderful time!

### Sunshine

Maida Williams has been undergoing tests for a thyroid tumor...we hope all will turn out well.



### Birthdays & Anniversaries

August birthdays include Debbie Hood, Sylvia Nasholm, Wes Lingerfelt & Lucky



Virgin, and many happy returns of the day! And celebrating an anniversary this month are Geary Scheffer and his wife, Congratulations! Also we would like to



apologize to Molly Kerlich for overlooking her July wedding anniversary, while Karl is gone he is definitely not forgotten!

### June Breakfast

OMS Breakfast Club - June 27, 2009. We had a beautiful morning and a new venue in which to meet and enjoy each other's company this month. Sixteen members of the OMS found their way to the Sunset Ridge Golf Center in Santa Maria to enjoy a delicious breakfast and lively conversation. Present this morning were Sandy and Paul Berthelot; Erica Erskine, Keith and Pat McKay; Wes, Jeannie & Marty Lingerfelt; Stan, Jan & Brenna Ferguson; Laura Kasteal; Bob Bullock; Paulette Mireles; and Don & Sylvia Nasholm.

This establishment gets the coffee out fast and refills the carafes frequently - great for the coffee hounds among us however, the design of the carafes challenged many of us - Sylvia decorated the table with each cup and Stan gave new meaning to the term "Lap Dance"! Today was very special as Jan and Stan was celebrating their 39th wedding anniversary. Wes was in top form and guessed their gift (rock hard dino poop). The field trip planned for Sunday the 28th generated a great deal of conversation.

Missing regulars were the Danas and the Hoods. Gloria had to work and Don was helping Shelly celebrate her 14th birthday today. Bill and Debbie were worn out and recovering from an extensive and demanding back yard repair (God bless all the little gophers!).

Paul and Pat were the winners of prizes provided by Gloria (has anyone kept count on the number of times Pat wins these?! Talk about luck!) and as Gloria would say, "a fun time was had by all!" See you next month!

The July breakfast will be on July 25 at (9:00 m at Gilli's Grill in Santa Maria at 1507 S. Broadway, which is the corner of Broadway & Enos. See you there!

### Field Trips:

Well we did a field trip, and on the beach too. I met up with Wes, Jeannie, and Paulette at the senior center in Santa Maria. My Harley was ready to





go and Paulette had no helmet, so sorry. On the way Wes and I traded the lead, I don't know who was more excited about getting to the beach. Pulling up to the check in booth I exchanged

\$8.00 for a place to park, no discount for a bike. Anyway we all parked together by the hamburger stand and headed out our different ways down the beach. Wes and Jeannie went south looking for whalebone and the rest of us went north. My group included potential new members, The Spann's, Mike, Angela and Laura, members, Paulette Mireles, Moksha, Erica Erskine, and Keith McKay. The beach wasn't conducive to rock picking, but Paulette did find a nice piece of fossil material, and a baby rattle snake, which was relocated to the swap area by Mike and me. It had to have fallen off the cliff face and was stranded, so Mother Nature was lent a cautious hand.



Upon returning to the parking lot after several hours we all met up and enjoyed some most excellent Jalama Burgers and conversation. We then loaded up in or on our vehicles and headed on home, sun roasted, sandy and tired.

**Sunday August 16, 2009, 10:00 a.m. till? Jan & Stan Ferguson's "I Am Not Dead Yet Sale" of fabulous materials collected over forty years of rockhounding from sites that are no longer open to collecting, and include Petrified Wood, Agates, Obsidians and others collected by Ralph & Helen Smith over a lifetime. Ralph Bishop says these are prime materials from all over the western and central states, and they have not been subjected to a lot of highgrading. So be sure to have your spending money with you. Meet at St. Joseph's Church in Nipomo at 298 S. Thompson Ave., and carpool over to the Ferguson's as they have limited space for parking. Bring buckets, gloves, water, lunch and your mad money. This fieldtrip is limited to OMS Members this time. There will be another date open to other clubs.**

Or you can make an appointment with Jan Ferguson (805) 474-9977.

## 166 Comes Clean Again

By Wayne Mills, Adopt-A-Highway Liaison

Saturday, July 11, the adopt-a-highway faithful group assembled for the bi-monthly clean up of Route 166. Thankfully, enough to do the job, because the highway was dirty! The faithful included: Stan and Brenna Ferguson, Geary Sheffer, Wes, Marty and Jeannie Lingerfelt, Paulette Mireles, Don Nasholm, and Wayne Mills.

There was a lot of trash and a dead skunk in the middle of the road, but nothing much of interest. The two highlights were being in the out-of-doors, and after clean-up snacks and conversation at Fredrico's in Santa Maria.

Thank you again to all who participated.

### *The Prospector*

By Paul Berthalot

*There was an article in the Chronicle late last week,  
About the fellers who went prospectin' bye Pike's Peak,  
So I bought me a paper and saw my money was well spent  
On 'count it minded me of a grizzled feller all stooped an' bent.*

*Now, some says he was a feeble-minded blacksmith  
An' some says he was a grizzled ol' fool,  
Who told tales at the Crazy Horse you couldn't believe  
Like the time he wuz chased by "them burhyesk bees".*

*Well, folks thought he was a crazy ol' buck,  
With the most curious streak of olde Irish luck,  
For no matter when next he'd come back to town  
He always had a bag o' gold to lay down.  
"It was back in the winter o' 86" he'd recount with a smile  
"An' the weather so bad you couldn't see half a mile,  
Well, me an' ol' Blue wuz near starved an' freezin' to death  
When we found a cabin t'keep us dry an' a log in the hearth.*

*Next day th' weather cleared up real purty an' nice  
An' you'd never knowed there was snow or ice,  
So we sets out ramblin' an' fore long we'd found some ol'  
mines*

*Plumb full o' gold an' silver an' such.  
Now townsfolk think me a queer wig  
An' I reckon I seem an ol' grizzled prig;  
But me an' ol' Blue, well, we's luckier than most,  
'Cause we's got them lost mines up th' mountain, y' see  
Jes' pass what's left of an ol' gnarled tree."*

*Now, if you should see a grizzled ol' feller  
With his clothes all tattered an' skin weather'd yellor,  
Yarn spinnin' Buy him a drink an' sit fer a spell,  
and drinkin' o'er at the Crazy Horse, well*

## CFMS/AFMS NEWS:

**A TRIP TO PARADISE:** We are off to a great start with our Endowment Fund fundraiser. So well, in fact, we're going to have a second spot to Camp Paradise!! Ray has decided to make it more interesting . . . Any club selling at least \$250 worth of tickets will have their club's name entered into a drawing for the second spot. That's only 50 tickets, folks! AND, if your club sells \$500 worth of tickets, your club's name gets entered twice! Another great change: you can purchase tickets at \$5 each—or get 5 for only \$20!

For club entries, a representative from your club will need to email or call Ray and request tickets. No money needs to be sent up front. Ray will mail red raffle tickets to your representative; then you mail them back with the purchaser's information, as well as the club's name on each ticket. When your club has sold \$250 worth of tickets, your club's name will then be written on another ticket, and entered into the separate drawing box. The more \$250 increments your club sells, the more entries your club will have. Your club may then do whatever it wants with the prize. One club has said, if they win, they'll create their own drawing from members who bought tickets. Be creative! Think of what your club might do with a \$350 trip to Paradise!

The deadline, for entries to be received, is October 31. The drawings will be held at the November meeting in Visalia upon adjournment of the Directors' meeting on Saturday. You don't need to be present to win, but I am S EARTH SCIENCE STUDIES

**Toward A Facility We Can Call Our Own?** We have news from Dick Pankey that is sad but that may well hold a silver lining. The San Pablo Bay Gem & Mineral Society has formally disbanded and is no more. But as they disbanded, they generously passed along a check for over \$15,000 to be used as might be needed by the CFMS.

I am very glad to report that a serious conversation has begun among Federation officers and committee members toward considering the idea of one day purchasing land and facilities that the CFMS might call its own, with the idea of using the moneys from the San Pablo club to start a fund toward such a purchase. As you may know, in recent years we've experienced unexpected changes and rescheduling at both Camp Paradise and Zzyzx, and having our own property would certainly give us much more latitude and discretion.

I would propose that we use this gift from the kind folks at San Pablo as a starting point for something in the future that is sound and substantial. To start a fund toward our own facility is just that, a starting point. I do realize there are issues such as taxes, security, maintenance, various constructions, ways to make it financially self-sufficient, and more. Certainly, all important concerns that need to be discussed and worked out, but they can all be worked out and, in my opinion, overcome. If we get a start, there are foundations and businesses we can contact for grants. They are out there.

My proposal is to keep the San Pablo donation as an open fund, as opposed to depositing it in the Endowment Fund or some other established fund. As with anything we do, there has to be a starting point and this could be that start. I look forward to sharing and discussing these ideas at the Directors Meeting in November!

I am SURE that your club's representative will be there! Thanks for all your support for the Endowment Fund!

**Changes to CFMS Bylaws: ARTICLE III Section 7: Honorary Membership Establishment.** The Federation hereby establishes an Honorary Membership to consist of persons who have contributed materially to the advancement of Mineralogy, Crystallography, Geology and allied Sciences. All issues of the newsletter shall be sent to honorary members. Free admission to the annual show shall also be provided.

**ARTICLE VI Section 9: Natural Disasters or War.** If the semiannual meetings of the CFMS cannot be held at the designated physical facilities, the Executive Committee is authorized to conduct the business by whatever means are available, including electronic mail. If the annual convention and show cannot be held at the designated location, the Executive Committee is authorized to either obtain a new location or postpone the convention and show. In the event the meetings will be conducted other than by physical presence, the Executive Committee will publish, for approval of the Directors, the agenda, the methods for proposing and voting on motions and any other business requiring Directors' approval. Minutes of the meetings and committee reports will be sent to all Directors and Chairpersons.

If events occur requiring this section to become necessary, any other section of Article VI conflicting with Section 9 is inoperative for that meeting.

These proposed changes to the bylaws will be voted on in November, so please let Wes Lingerfelt know if you feel strongly about any of the changes.

## Proposed Changes to OMS Operating Regulations

4.4 Dues are established to be as set forth herein, effective 01 January 2010, in the following amounts:

a. Regular adult Membership \$24.00

Two adult family members: \$34.00

Each additional family member at the same address \$5.00

Processing fee: \$10.00, a one time fee for each new adult member for name badge (required). Membership includes one monthly bulletin per family.

b. Junior Membership (Under 18) \$5.00

c. Charter Membership-\$0

d. Honorary Membership -\$0

e. Life Membership -\$0

4.6 New members shall pay dues upon acceptance by the Board of Directors. The dues shall be prorated to one half the amount if after the month of June. The one time fee for new adult members shall not be prorated.

## Orcutt Mineral Society Board Meeting Elwin Mussell Sr. Center, Santa Maria, Ca. July 7, 2009



President Debbie Hood called the meeting to order at 7:04 p.m.

Members present were Wes Lingerfelt, Debbie Hood, Gloria Dana, Jan Ferguson, Mike Henson, Elaine Von Achen, Sharon Duncan and Sandy Berthelot. Guest included Bill Hood, Paul Berthelot and our Allan Hancock College Scholarship recipient for 2009, Katie O'Neill.

**Minutes:** Elaine Von Achen read the minutes from the June board meeting. It was noted that John Von Achen was left off of the guests who were present. Minutes were approved as amended.

**Treasurer's report:** Wes Lingerfelt gave the treasurer's report. It was accepted as given.

**Correspondence:** Elaine Von Achen reported newsletters received from San Gorgonio Mineral &

Gem Society, Santa Cruz Mineral & Gem Society and South Orange Co. Gem & Mineral Society. We also received a postcard announcing the San Francisco Fine Mineral Show on July 10<sup>th</sup> through the 12<sup>th</sup>, 2009.

### Committee Reports:

**Annual Gem Show: Review of up-coming show.** Wes Lingerfelt reported that it has been decided that we would not have a country store this year as we could make use of the classroom for a couple of extra vendors. Therefore, we will have a table with plants for sale in front by the Hospitality table. Don Nasholm and Wes Lingerfelt will put signs up on 101 freeway, both North and South bound sides. It was again noted that the signs need to be up dated if time allows. Wes and Wayne Mills will get together on a press release. Don Dana is seeing to a commercial that will air from July 18<sup>th</sup> through the show on Mega Radio 97.1. Wes noted that we have 50 plus vendors signed up and have approximately 6 outside spaces left. John Von Achen has arranged for security for Thursday, Friday and Saturday nights. Elaine Von Achen has quite a few people signed up for displays and demonstrations. She will announce, at the general meeting, that members need to get with her if they are interested in displaying this year. Layout of the outside lot will be Wednesday, August 5<sup>th</sup> at 9:00 a.m. Elaine Von Achen will bring coffee and donuts. Set-up inside will be Thursday, August 6<sup>th</sup> at 8:00 a.m. Debbie Hood will bring donuts. We could use some help with clean-up Monday morning. Wes will pick-up the meat for the Saturday night barbeque.

**Breakfast:** The July breakfast will be held on the 25<sup>th</sup> at Gilli's Grill restaurant, 1507 S. Broadway, Santa Maria at 9:00 a.m.

**Bulletin:** The bulletin is out on the web and mailed bulletins will go out tomorrow.

**CFMS:** Wes Lingerfelt said he had registration forms for the Zzyzx this year to be held November 15<sup>th</sup> through the 22<sup>nd</sup>. Fee is \$350.00 per person. The Seminar will be held at Soda Springs approximately 50 miles northeast of Barstow, Ca.

**Education:** None

**Field Trip:** None

**Highway Clean-up:** The next clean-up will be held July 11<sup>th</sup>. Members will meet at highway 101 and 166 at 8:00 a.m.

**Scholarships:** None

**Sunshine:** Both Sylvia Nasholm and Debbie Hood will be having knee surgery.

**Old Business:**

## Ore-Cutts

Elaine Von Achen reported that she ordered, and has received, the fabric for the vests. She would like to have vests available, to try on, at the next general meeting.

Another topic under discussion is the clubs desire to have a lapidary workshop. Wes is working on the feasibility of renting some space and putting up some kind of a structure at St. Joseph's church in Nipomo. He is working on this and is making some progress.

### **New Business:**

Our program for July's general meeting will be given by Jim Mills of Shandon/Creston who will be speaking on "Identifying Petrified Wood".

July's display is any 1x1 display.

Refreshments will be cake and coffee/tea.

The meeting was adjourned by President, Debbie Hood at 8:30 p.m.

Respectfully submitted:

Elaine Von Achen, Secretary, OMS

## **Orcutt Mineral Society General Meeting Elwin Mussell Sr. Center, Santa Maria, Ca. July 14, 2009**

President Debbie Hood called the meeting to order at 7:00 p.m.

Mike Henson gave the invocation.

Joseph Martinez led the flag salute.

Sheriff, Bill Hood, said everyone had badges.

**Minutes:** Elaine Von Achen read the minutes of the July 7, 2009 board meeting. Minutes were approved as read.

**Treasurer's report:** Wes Lingerfelt gave the treasurer's report. It was accepted as given.

### **Correspondence:**

Elaine Von Achen reported newsletters from Santa Cruz Mineral & Gem Society, South Orange County Gem & Mineral Society, San Geronio Mineral & Gem Society and the Sun Valley Indian School. She also noted a DVD for sale, titled "What's Hot in Tucson", detailing a review of the Tucson show. She noted a flier from Jean Sumrall inviting anyone interested in a beginning bracelet workshop on Saturday, July 25, 2009.

### **Committee Reports:**

**Abused Children:** Jan Ferguson reported the evening's prizes for the July drawing are a trilobite, a tourmaline cluster and an aragonite cluster.

**Annual Gem Show:** Wayne Mills is still open for donations to the treasure chest. Sharon Duncan will be in charge of the clubs show case and asked that anyone

interested in showing an item to please get with her. Elaine Von Achen asked for anyone who has not signed-up for a showcase and wants one, to let her know. Joe Martines has sign-up sheets for kitchen help. Wes has fliers and posters available to pass out. Wes also has raffle tickets available for the treasure chest. They are \$5.00 per book with four books to a packet.

**Breakfast:** Everyone had a good breakfast at the Sunset Ridge. Gloria announced the next breakfast will be held at Gilli's Grill Restaurant, 1507 S. Broadway, Santa Maria at 9:00 a.m. on the 25<sup>th</sup> of July.

**Budget & Audit:** None

**Bulletin:** Bulletins were out late this month due to a computer glitch. Snail mail has gone out.

**CFMS:** None

**Door Prize:** Bob Bullock reported a Septarian Nodule donated by Laura Kasteal as well as beads, a glass diamond and a trilobite egg as some of the evening's prizes.

**Education:** None

**Historian:** Elaine Von Achen noted that she has a photo album with pictures from the recent barbeque and asked members to stop and look at it.

**Hospitality:** Sharon Duncan reported 45 members and 11 guests. Guests were Pat McKay, Bob and Phyllis Roller, Austin Roller, David O'Callahan, Neil Collison, Michael, Angela and Laura Spann, Joe Azevedo and Jim Mills and his wife. Guests were greeted and thanked.

**Field Trip:** The field trip to Ozena (out 166 to 33) was well attended and everyone had a good time. They all came away with some rock. Bob Bullock has a trip planned for the 18<sup>th</sup> of July to Jalama Beach. Members will meet at 8:00 a.m. at Mussell Senior Center.

**Highway Clean up:** Members showed up on July 11<sup>th</sup> ready and willing to work. They did a great job and went for coffee and pastries afterward.

**Library:** Garry Sheffer will not be at the next general meeting so if there is anything you would like to check out be sure to do so this evening.

**Locker Clean up:** None

**Membership:** None

**Political Action Committee:** None

**Property:** None

**Refreshments:** Paulette Miereles thanked members for bringing cake.

**Scholarships:** Wayne Mills welcomed Katie O'Neill, the recipient of an OMS scholarship from Hancock College.

**Sunshine:** Keith and Pat McKay were in an auto accident near the Los Angeles Air Port. They are fine but the car isn't so great.

**Old Business:**

Wes Lingerfelt is still working on the possibility of OMS having a lapidary workshop on the grounds of the Saint Joseph Church. Elaine Von Achen is still working on making vests available.

**New Business:**

Wayne Mills asked if anyone had done the word contest printed in the newsletter. Sandy Berthelot and Betty Kern both brought their list of words. Wayne will check them and announce the winner at the next meeting. The prize is a sphere.

The program for this evening is "Identifying Petrified Wood" and is given by Jim Mills of the Shandon/Creston area.

Displays for July are any 1 x 1 display.

The meeting was adjourned by President, Debbie Hood at 9:00 p.m.

Respectfully submitted:

Elaine Von Achen, Secretary, OMS

Water continually dropping will wear hard rocks hollow.

Plutarch (46-120 A.D.)

*Greek Essayist and Biographer*

*Which just means that the first hundred million years of a rock's life are the hardest. - Editor*

**August 2009 Calendar**

Tuesday August 4, 2009 7:00 till 8:00p.m.	OMS Board Meeting-Mussell Senior Center, Santa Maria. All members are welcome at this business meeting.
Wednesday, August 5, 2009, 9:00 a.m. to completion	Mark out show parameters. This is an easy job, so come on out and help!
Thursday August 6, 2009 8:00 a.m. till complete	Show set up at St Joseph's Church 298 S. Thompson Ave. Nipomo. All members are cordially invited!
Friday, Saturday & Sunday August 7-9 2009 10:00 a.m. to 5:00 p.m.	<b>OMS Rainbow of Gems Show</b> Invite all your friends, relations and neighbors! Have a wonderful time!
Sunday, August 9, 2009 7:00 till 9:00p.m.	Post-show victory dinner. at the Golden Dragon Restaurant, 151 Dana St. Nipomo



Tuesday August 11, 2009 7:00 to 9:00 p.m.	OMS General Meeting Elwin Mussell Senior Center. Program- Show Recap, slides from show Display- Show Treasures Refreshments-Cookies
Sunday, August 16, 2009 10:00 a.m. till?	Field Trip- To Jan & Stan Ferguson's. Jan & Stan Ferguson's " <b>I Am Not Dead Yet Sale</b> " Meet at St. Joseph's Church in Nipomo at 928 S. Thompson Ave., and carpool over to the Ferguson's as they have limited space for parking. This fieldtrip is limited to OMS Members this time. Bring buckets, gloves, water, lunch and your mad money . For information call Bob Bullock, 928-6372.
Saturday, August 22, 2009 9:00 till 10:00 a.m.	OMS Breakfast- To Francisco's Country Kitchen. For information Call Gloria Dana, 929-6429.

**September 2009 Calendar**

Tuesday Sept. 1, 2009 7:00 to 8:00 p.m.	OMS Board Meeting-Elwin Mussell Senior Center. All members are welcome at this business meeting.
Tuesday Sept. 8, 2009 7:00 to 9:00 p.m.	OMS General Meeting-Elwin Mussell Senior Center. <ul style="list-style-type: none"> <li>• Program "Those Fabulous Thunder Eggs, Part 1" a CFMS show</li> <li>• Display: Fossils or Fossil Fakes</li> <li>• Refreshments-Pie</li> </ul>
Saturday Sept. 12, 2009 8:00 to 10:00 a.m.	Roadside Clean up After the cleanup, coffee and pastry at "Francisco's Country Kitchen" in Santa Maria.
Saturday, Sept. 19, 2009 8:00 a.m. till?	Field Trip – To be announced. For information call Bob Bullock, 928-6372.
Saturday Sept. 24 2009 8:15 to 9:15 a.m.	OMS Monthly Breakfast- To be announced. For information Call Gloria Dana, 929-6429.

**Erica Erskine is looking for a place to live in Santa Maria. If you know of anyplace please call her at (805) 967-8691**

**CFMS Show Schedule 2009**

**August 1-2 2009, San Francisco, CA**  
 San Francisco Gem & Mineral Society  
 San Francisco County Fair Building  
 Ninth Ave. at Lincoln Way  
 Hours: Sat. 10-6, Sun. 10-5  
 Website: [www.sfgms.org](http://www.sfgms.org)  
 Show Flyer [click here](#).



## Ore-Cutts

### August 7-9 2009, Nipomo, CA

Orcutt Mineral Society  
St Joseph's Church  
298 S. Thompson Ave.  
Hours: 9-5 daily  
Wes Lingerfelt (805) 929-388  
Email: [Rocks4u@prodigy.net](mailto:Rocks4u@prodigy.net)  
Website: [www.omsinc.org](http://www.omsinc.org)  
Show Flyer: [click here.](#)

### August 14, 15 & 16 2009, Tehachapi, CA

Tehachapi Gem & Mineral Society  
St Malachy Catholic Church  
407 West E. Street  
Hours: Fri. &: Sat. 8-7:30; Sun. 8-5:30  
Chuck Overall (661) 821-4650  
Email: [Luckydog5433@aol.com](mailto:Luckydog5433@aol.com)

### August 22-23 2009, Orangevale, CA

Orangevale Communit Center  
6826 Hazel Ave.  
Hours: Fri. &: Sat. 10-6; Sun. 10-5  
John Moulder  
Email: [gbcorp@surewest.net](mailto:gbcorp@surewest.net)  
Website: [www.treasuretroveofgems.com](http://www.treasuretroveofgems.com)

### September 4-7 2009, Fort Bragg, CA

Mendocino Coast Gem & Mineral Society  
Town Hall  
Cr. of Main & Laurel  
Hours: Fri. to Sun. 10-6, Mon. 10-4  
Don McDonnell / (707) 964-3116

### September 12-13 2009, Vista, CA

Vista Gem & Mineral Society  
Antique Gas & Steam Engine Museum  
2040 N. Santa Fe Ave.  
Hours: Sat. 10-5; Sun. 10-4  
Fred Wilson (760) 433-8464  
Cherie Wilson (760) 941-7073  
Lois Harr (560) 724-0395

### September 19-20 2009, Redwood City, CA

Sequoia Gem & Mineral Society  
Redwood City Community Activities Bldg.  
1400 Roosevelt Ave.  
Hours: 10-5 daily  
Carol Corden (650) 248-7155  
Email: [coorden@comcast.net](mailto:coorden@comcast.net)  
Website: [www.sgms.drifmine.com/home.htm](http://www.sgms.drifmine.com/home.htm)  
Show Flyer: [click here.](#)

### September 19-20 2009, Paso Robles, CA

Santa Lucia Rockhounds  
Pioneer Park & Museum  
2010 Riverside Ave.  
Hours: 10 - 5 both days  
Richard Smith (805) 467-2966  
E-mail: [jonme2@wildblue.net](mailto:jonme2@wildblue.net)

Show Flyer: [click here.](#)

### September 19-20 2009, Stockton, CA

Stockton Lapidary and Mineral Club  
Scottish Rite Masonic Center  
33 West Alpine Ave.  
Hours: 10 - 5 both days  
(209) 946-0113  
E-mail: [footsey1@yahoo.com](mailto:footsey1@yahoo.com)  
Website: [www.stocktonlapidary.com](http://www.stocktonlapidary.com)

### September 26-27 2009, Carmel, CA

Carmel Valley Gem & Mineral Society  
Monterey Fairgrounds  
Hours: Sat. 10 - 6; Sun. 10-5  
E-mail:  
Website: [www.cvgms.org](http://www.cvgms.org)  
Show Flyer [click here.](#)

### September 26-27 2009, Downey, CA

Delvers Gem & Mineral Society  
Women's Club of Downey  
9813 Paramount Blvd.  
Hours: Sat. 10 - 6; Sun. 10-4  
Nancy Bird (562) 697-0636  
E-mail: [nancyjbird@verison.net](mailto:nancyjbird@verison.net)

### September 26-27 2009, Monterey, CA

Carmel Valley Gem and Mineral Society  
Monterey Fairgrounds  
2004 Fairgrounds Road  
Sky Paxton (831) 262-2492  
E-mail: [sky@familystones.net](mailto:sky@familystones.net)  
Janis Rovetti (831) 657-1933  
E-mail: [Janis12@sbcglobal.net](mailto:Janis12@sbcglobal.net)  
Website: [www.cvgms.org](http://www.cvgms.org)

## 42nd Annual Gem Show

Earth's Treasures - Rocks - Minerals  
Exhibits - Demo's - Equipment

3 Big Days! 10AM - 5PM

August 7th, 8th & 9th, 2009

St. Joseph's Church

298 S. Thompson Ave. Nipomo, CA.

ONE-OF-A-KIND Stones, Jewelry &  
Merchandise from all over the World. Rock  
Bottom Prices! Gem Raffle, Prizes!

Food On Sale!

Santa Maria Style BBQ on Saturday Night (2nd)  
\$10.00 Adults - \$5.00 Kids (Under 12)

**FREE PARKING - FREE ADMISSION**

Sponsored by Orcutt Mineral  
Society, Inc.  
PO Box 106 Santa Maria, Ca.  
93456

??? 805-929-3788 ???  
<http://www.omsinc.org>  
A Public Benefit, Non-profit  
Corporation



**OMS Webmaster - Wes Lingerfelt –(805) 929-3788.**

Check out our OMS web site at <http://omsinc.org> or send e-mail to [info@omsinc.org](mailto:info@omsinc.org).

**OMS Membership** (dues) is \$24 per year. Junior memberships (under 18) are \$10 per year. Membership dues are due January 1, and are prorated for new members for each month thereafter. Membership Chairperson is Elaine Von Achen (805) 929-1488

Ore-Cutts Photo Credits: Photographs used in this bulletin were taken by Wes Lingerfelt, & Wayne Mills except where noted

### 2009 OMS Officers

President	Debbie Hood	(805) 481-6860
Pres. Elect	Sylvia Nasholm	(805) 481-0923
Secretary	Elaine Von Achen	(805) 929-1488
Treasurer	Wes Lingerfelt	(805) 929-3788
Immed. Past Pres.	Wayne Mills	(805) 481-3495
Federation. Rep.	Wes Lingerfelt	(805) 929-3788



ORE-CUTTS (named after William Orcutt) was published in 1966. Member Helen Azevedo was the first editor. Orcutt Mineral Society was founded in 1958 and was named after William Orcutt, a geologist and civil engineer who worked in the Santa Maria Valley as a District manager for Union Oil Company in 1888. In 1889 William Orcutt discovered the mineral and fossil wealth of the La Brea Tar Pits on the property of Captain Alan Hancock. The La Brea Tar Pits are one of the most significant fossil finds in paleontological history. The OMS is a non-profit club dedicated to stimulating an interest in the earth sciences. The club offers educational programs, field trips, scholarships and other opportunities for families and individuals to pursue an interest in the collecting and treatment of lapidary materials, fossils, gems, minerals, and other facets of the Earth Sciences. In addition, another goal of this Society is to promote good fellowship and proper ethics in the pursuit of the Society's endeavors. Operating Rules have been set forth to guide the Officers and members of the Society in accomplishing these aims. Affiliates of the OMS include the American Federation of Mineralogical Societies and the California Federation of Mineralogical Societies

### OMS Editor

Debbie Hood 805-481-6860 [debihood1@sbcglobal.net](mailto:debihood1@sbcglobal.net)



**ADDRESS CORRECTION REQUESTED**

Orcutt Mineral Society, Inc.  
PO Box 106  
Santa Maria, CA. 93456-0106

